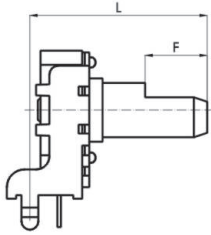
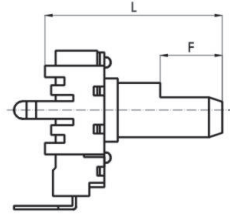


Without bushing 無軸套

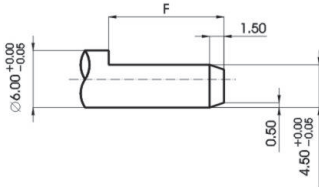
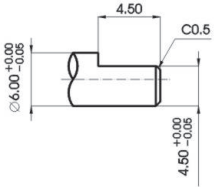
Horizontal



Vertical



* only 15F

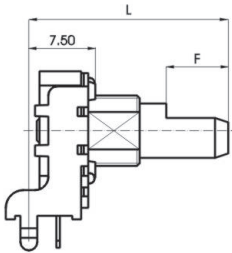


F TYPE:

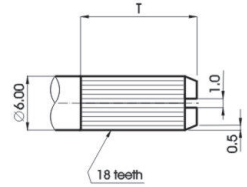
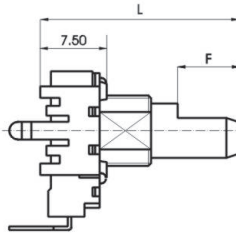
X	A	B	J	C	K	D	L	E	M
L	15	20	22.5	25	27.5	30	32.5	35	37.5
F	4.5	7	7	12	12	12	12	12	12

With bushing 有軸套

Horizontal

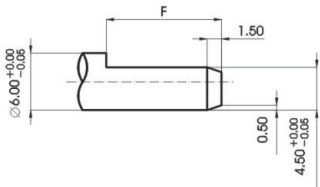


Vertical



KQ TYPE:

X	7
L	22.5
T	12

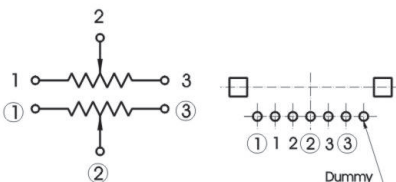


F TYPE:

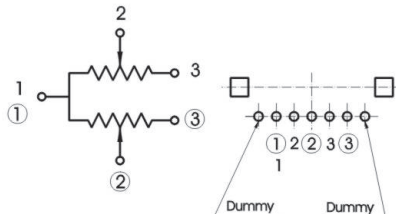
X	B	J	C	K	D	L	E	M
L	20	22.5	25	27.5	30	32.5	35	37.5
F	7	7	12	12	12	12	12	12

Circuit explanation 電路說明

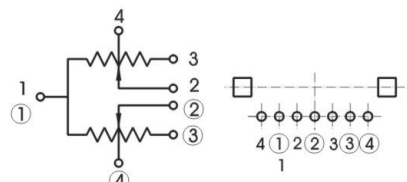
G



H



Y



Mechanical characteristics:機械的性能

Total rotational angle 全迴轉角度	300° ± 5°	
Rotational torque 迴轉扭力	2~20mN.m (20~200gf.cm)	
Rotation stopper strength 止迴轉強度	Without bushing 無軸套	0.5 N.m (5kgf.cm)
	With bushing 有軸套	0.6 N.m (6kgf.cm)
Push pull strength 軸推拉強度	80N (8kgf)	
Shaft lever wobble 軸搖晃	0.7*L/30mmp-p MAX.	

Electrical characteristics:電氣的性能

Total resistance 總阻值	5KΩ~2MΩ	
Total resistance tolerance 總阻值容許差	±20% (more than 1MΩ ± 30%)	
Rated power 定格電力	0.05W	
Max. operating voltage 最高使用電壓	50V AC /20V DC	
Resistance taper 阻值線性	A,B,C,MN	
Residual resistance 殘留阻值	R ≥ 250KΩ 0.1% max. of total resistance	
	250KΩ > R > 10KΩ	20Ω max.
	10KΩ ≥ R	10Ω max.
Slide noise 滑動噪音	less than 100mV	
Insulation resistance 絕緣抵抗	more than 100MΩ at DC 250V	
Gang error 相互偏差	for volume control 音量用	-40 to 0 dB ≤ 3dB
	for tone control 音質用	at center dB ≤ 2dB

Durability:耐久的性能

Rotational life 迴轉壽命	10,000 cycles
-------------------------	---------------