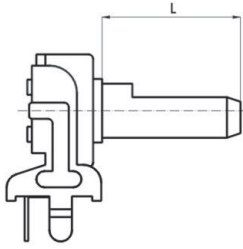


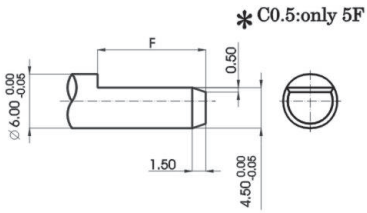
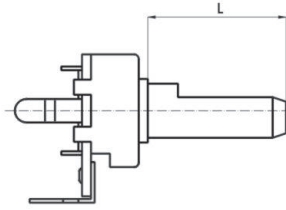
Type of shaft: 軸的型式

INSULATED SHAFT

Horizontal

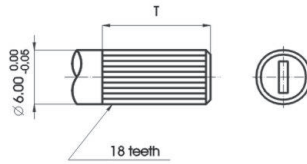


Vertical



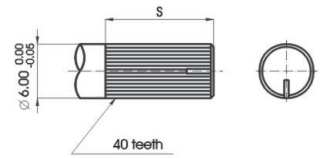
F TYPE:

X	L	K	I	J	A	H	B	C
L	5	7	10	10	15	15	20	25
F	5	7	7	8	7	12	12	12



T TYPE:

X	V	W	Y	Z		
L	5	10	15	20		
T	5	10	15	15		

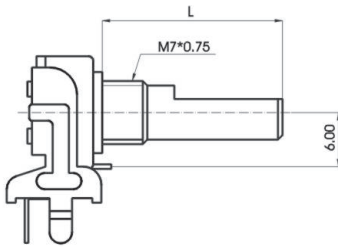


S TYPE:

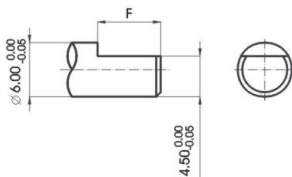
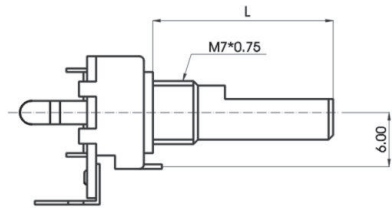
X	N	O	R			
L	10	15	20			
S	7	10	12			

METAL SHAFT

Horizontal

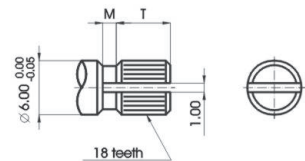


Vertical



F TYPE:

X	F	A	B	C		
L	10	15	20	25		
F	4	7	12	12		



KQ TYPE:

X	0	2	3	4		
L	10	15	20	25		
T	3.5	7.5	10	10		
M	0.5	1	2	2		

Mechanical characteristics: 機械的性能

Total rotational angle 全迴轉角度	300°±10°
Rotational torque 迴轉扭力	2~15mN.m (20~150gf.cm)
Rotation stopper strength 止迴轉強度	0.4 N.m (4kgf.cm)
Push pull strength 軸推拉強度	40N (4kgf)
Click position C.C.位置	Center click

Electrical characteristics: 電氣的性能

Total resistance 總阻值	5KΩ ~2MΩ
Total resistance tolerance 總阻值容許差	±20% (more than 1MΩ ±30%)
Rated power 定格電力	curve B:0.04W other than B:0.02W
Max. operating voltage 最高使用電壓	curve B:100V other than B:50V
Resistance taper 阻值線性	A,B,C
Residual resistance 殘留阻值	R≥250KΩ 0.1% max. of total resistance 250KΩ > R > 10KΩ 20Ω max. 10KΩ ≥ R 10Ω max.
Insulation resistance 絕緣抵抗	more than 50MΩ at DC 250V
Gang error 相互偏差	-40~0 dB ≤ 3dB

Durability: 耐久的性能

Rotational life 迴轉壽命	15,000 cycles
-------------------------	---------------